

Technical Bulletin

DP08	TB017-2012	Élan Motorsports Technologies	
From:	John Harris		
Subject:	DP08 Rear Wing Mounts	Date:	Jan 27th, 2012

Attention all Élan DP08 teams

In an effort to continually improve our product and in response to certain isolated incidents involving some cracking of DP08-47-009, Élan has produced a new Rear Wing Mount (DP08-47-023) that offers improved fatigue life characteristics. Contact Carl Haas Auto for price and purchasing options.

In order to limit induced stresses during installation, ensure to secure the mount (DP08-47-023) to the pylon (DP08-47-010) **before** securing it to the rear wing mainplane (DP08-47-008) with the longer ¼-20 bolt in the forward wing mounting hole. After initial installation, wing adjustment can be carried out as normal. Élan also strongly recommends the use of Spacer 93-B-2020 as outlined in Technical Bulletin TB012-DP08-2011 and as seen in Figure 2. See Table 1 for a list of recommended fasteners. Fastener length may vary slightly from recommendation due to manufacturing tolerances. See Figure 1 for a depiction of mount DP08-47-023.

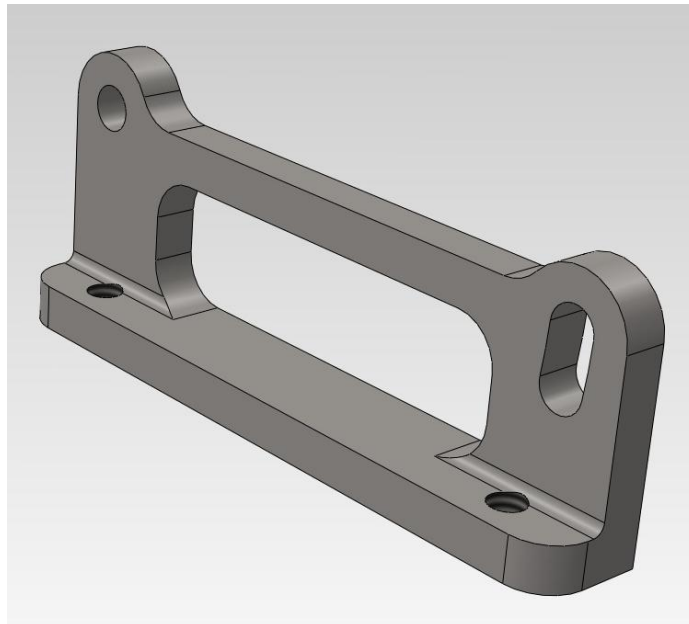


Figure 1. Rear Wing Mount

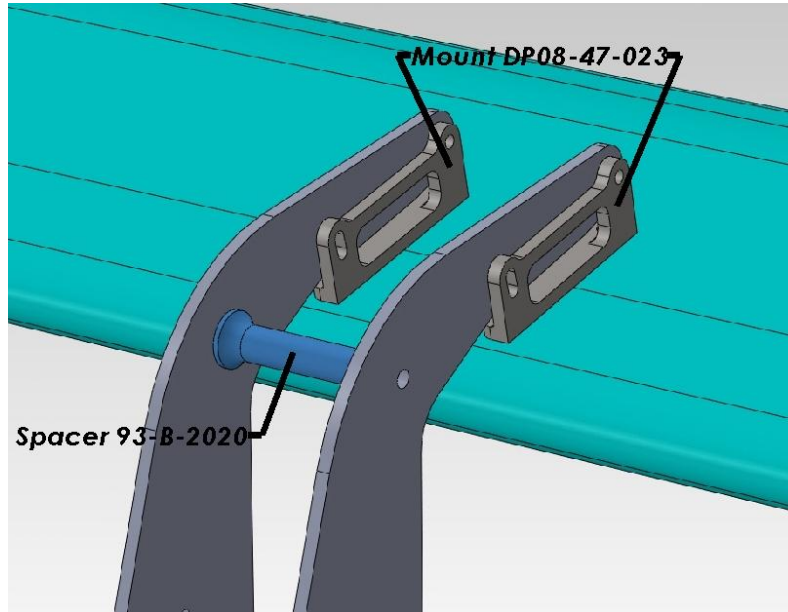


Figure 2. Mount Configuration

Table 1. Recommended Fasteners

Qty	Dimensions	Type	Location
2	1/4"-20 x 1 1/8"	Button Head Cap Screw	Fwd Mainplane
2	1/4"-20 x 7/8"	Button Head Cap Screw	Aft Mainplane
4	1/4"-20 x 7/8"	Button Head Cap Screw	Pylon
4	1/4"-20	K-Nut	Pylon
8	1/4" Thin	Washer	Pylon